

EMERGING PATTERN, TRENDS AND CAUSES OF URBANISATION IN JAMMU CITY, JAMMU AND KASHMIR

Jyoti Sharma¹, Dr. Anuj Gupta², Renu Sharma³, Amandeep Singh⁴, Dr. Amandeep Kaur⁵, Rajni Verma⁶, Dr. Saloni⁷

Abstract: Urbanization is widely increasing in India as well as world where Jammu city is no exception. In recent years, the city has experienced an unprecedented increase in population attributable to migration from the valley and adjacent villages, towns and other districts. The commercial and industrial activities also lead to urbanisation in the city. This paper tried to analyse the historical development of urbanization in Jammu city and also study the urban growth of Jammu city in relation to its population and area. This paper also seeks to analyze the causes behind urbanization and urban growth of Jammu city. The various causes responsible for urbanization and urban growth of Jammu city are Administrative centre, Employment Opportunities, Industrialization, Commercialization, Social Benefits and Services, Education Facilities, Healthcare Facilities, Migration and Tension in the border areas of Jammu region.

Keywords: Urbanisation, Trends, Causes, Migration, Jammu City.

Introduction: Urbanization is a significant phenomenon characterized by the rising proportion of the population residing in urban areas. This trend is propelled by both natural population growth and migration from rural to urban regions. Consequently, urbanization entails multifaceted transformations across demographic, social, economic, technological, and environmental dimensions over time, space, and sectors, as elucidated by Fox and Goodfelloe (2016). According to Thompson “Urbanization is characterized by the movement of people from small communities concerned solely with agricultural larger communities whose activities are primarily centred in government, trade, manufacture and allied interest”. It is a geographical process that involves the movement of people from one place to another and urban growth is found uneven over the space (Thompson, 1935). Urban growth refers to an increase in the absolute size of the urban population of an area. This could be at the level of individual settlement or a group of settlements. Urban growth and urbanization often occur together. Urban growth results from urbanization which is the movement of people from rural areas to urban areas (Mandal, 2000).

Objectives: Following are the objective of the study:

¹ Lecturer, Government Degree College, Kathua, Jammu & Kashmir.

² Assistant Professor, Higher Education Department, Jammu & Kashmir.

³ Assistant Professor, Department of Geography, Central University of Punjab, Bathinda.

⁴ Research Scholar, Department of Geography, Central University of Punjab, Bathinda.

⁵ Assistant Professor, Department of Economics, Guru Kashi University, Talwandi Sabo (Punjab).

⁶ Lecturer Department of Geography, Government Degree College, Kathua, Jammu & Kashmir.

⁷ Teacher, Department of School Education, Jammu & Kashmir

1. To study the historical development of urbanization in Jammu city.
2. To study the urban growth of Jammu city in relation to its population and area.
3. To analyze the causes behind urbanization and urban growth of Jammu city.

Data base and Methodology: Methodology is the organized approach towards the achievement of the desirable objectives of the study through empirical, technical and scientific tools. The current investigation is grounded upon secondary data, which has been sourced from various publications including books, research papers, theses, and other printed materials pertinent to the subject matter under examination. The other sources of secondary data are Jammu Development Authority (JDA, 2022), Census of India 2011 and Jammu Municipal Corporation.

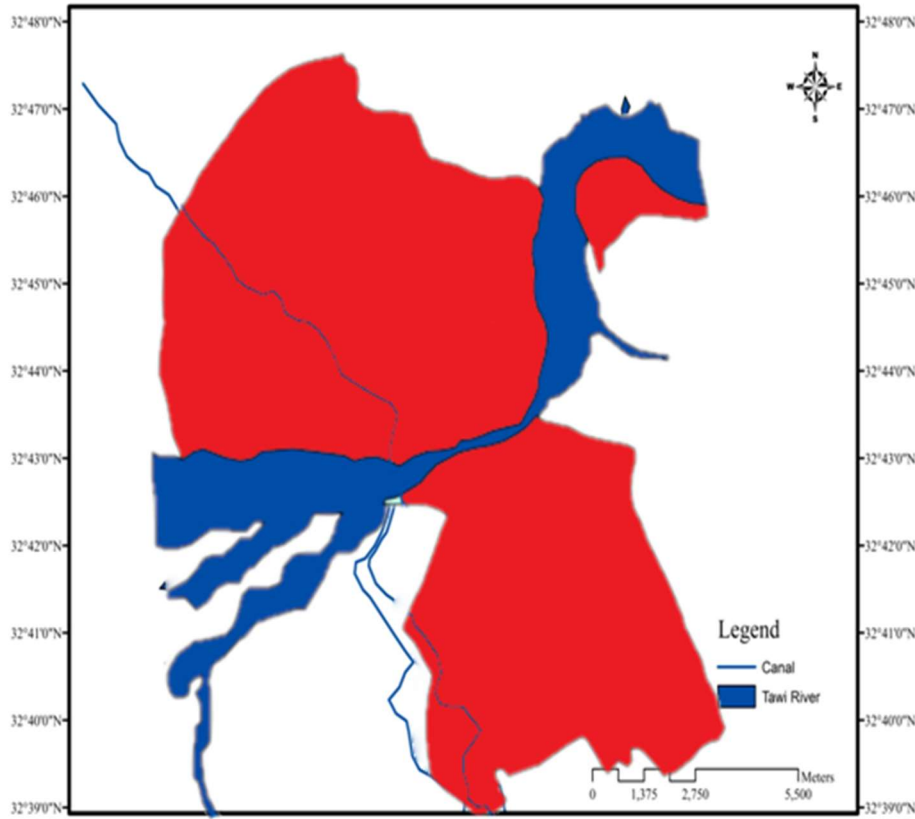
Statistical Technique used is the Percentage analysis: Percentage analysis is a systematic approach employed to portray raw data streams as percentages, aiming to enhance the comprehension of collected data. This method serves the purpose of discerning comparisons between two or more series of data.

$$\text{Percentage} = \text{Number of respondents} / \text{total no. of respondents} \times 100$$

Computer Based Techniques: Computer based techniques like M.S. Office and Microsoft Excel 2010 were used for the analysis of spatial and non spatial data. The interpretation of results which are presented in the research also done through these computer based techniques.

Study Area: Jammu, also known as the 'City of Temples,' is situated on both banks of the River Tawi. The older section of the city primarily occupies the right bank, while the newer developments predominantly extend along the left bank (Manhas, V.S. and Jasrotia, R., 2013). The study area encompasses latitudes between 32°39' N to 32° 48' N and longitudes between 74°48' E to 74° 54' E, with an elevation of 1030 feet above mean sea level. The city is interconnected by road networks with various parts of Jammu and Kashmir, as well as other urban centers. Recent years have witnessed a substantial influx of migrants from the valley, nearby villages, towns, and adjacent districts, resulting in a notable population increase. Additionally, there has been considerable expansion in commercial and industrial activities within the city. Presently, the municipal limits encompass an area of approximately 167 square kilometers, divided into 71 wards as of the 2011 census.

Fig.1 Location Map of Jammu City, Jammu and Kashmir



Source: Jammu Municipal Corporation (JMC), Government of Jammu and Kashmir.

Urbanization in India: The recent growth in urbanization in India has been achieved in the last fifty years. The vast growth of urban population in India is due to the rise in migration of population from rural to urban areas in addition the rise of industrialization and revolution in transport and business sectors.

It is apparent from the table and figure 1.1 that the total population of the India is increasing rapidly. In the similar way the urban population is also increasing day by day. In 1901 only 10.84% population resides in urban areas and reached to 13.86% in 1941 which further increase and to 19.91% in 1971 (Census of India). The urban population again increased to 25.72% in 1991 to 27.78% in 2001 and 31.16% in 2011 (Census of India). This clearly shows that the urban population in India has been increasing from the past and still goes on increasing day by day.

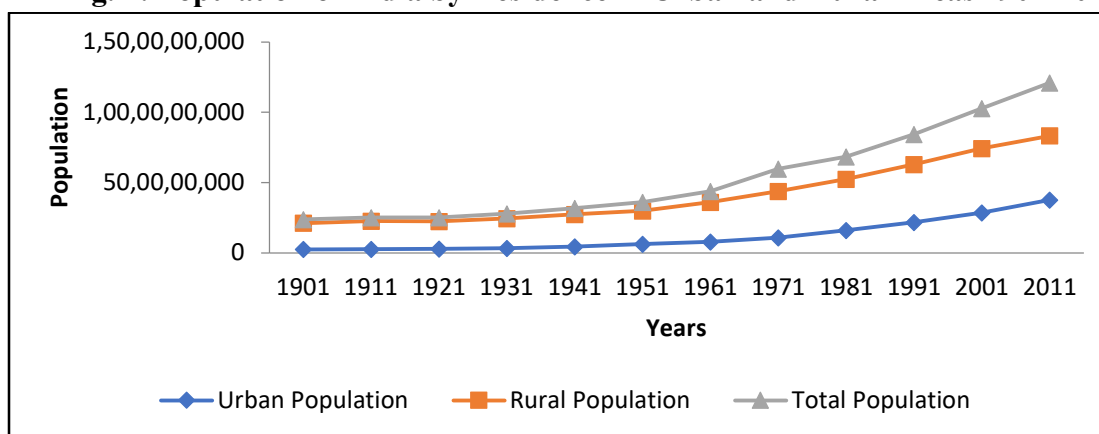
Table 1: Population of India by Residence in Urban and Rural Areas 1901-2011

--	--	--	--	--	--

Census Years	No. of Urban Agglomeration/ town	Total Population	Urban Population	Rural Population	Urban Population in %
1901	1827	238396327	25851873	212544454	10.84
1911	1825	252093390	25941633	226151757	10.29
1921	1949	251321213	28086167	223235043	11.18
1931	2072	278977238	33455989	245521249	11.99
1941	2250	318660580	44153297	274507283	13.86
1951	2843	361088090	62443709	298644381	17.29
1961	2363	439234771	78936603	360298168	17.97
1971	2590	598159652	109113977	439045675	19.91
1981	3378	683329097	159462547	523866550	23.33
1991	3768	844324222	217177625	628691676	25.72
2001	5161	1028737436	286119689	742490639	27.78
2011	7935	1210569573	377106125	833463448	31.16

Source: Various Census Reports of India

Fig. 2: Population of India by Residence in Urban and Rural Areas 1901-2011



Source: Various Census Reports of India

Urbanization in Jammu and Kashmir: Urbanization in Jammu and Kashmir has been a bi metropolitan climax in which the cities of Srinagar and Jammu take over about 2/3rd of the urban population. The urban system in Jammu and Kashmir is not integrated over space and in function (Manzoor & Ishtiaq, 2018). Consequently there are breaks and imbalances in urban hierarchy.

The table and figure 1.2 show the urban population in Jammu and Kashmir. The urban population which was 7.42% in 1901 was increased to 13.12 in 1941. There is a slight decrease in urban population to 13.05% in 1951. But after that it goes on increasing and reached to 18.59% in 1971 which further increased to 24.88% in 2001 and 27.22% in 2011. The urban population of Jammu and Kashmir is increasing rapidly but the cities of Jammu and Srinagar are becoming

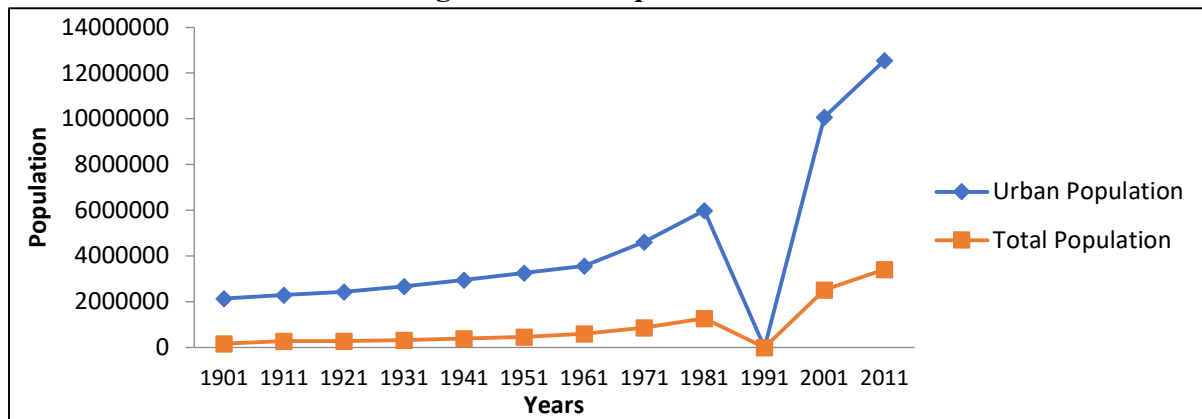
urbanized much rapidly than any other city in Jammu and Kashmir. This led to the expansion of both the cities outwards.

Table 2: Urban Population of J&K

Census Years	No. of Urban Agglomeration/ town	Total Population	Urban Population	Percentage of Urban Population
1901	2	2139362	158748	7.42
1911	45	2292535	268518	11.71
1921	29	2424339	267754	11.04
1931	31	2670208	317805	11.90
1941	32	2943728	386565	13.12
1951	25	3253852	457213	13.05
1961	43	3560976	593315	16.66
1971	45	4616632	858221	18.59
1981	58	5987389	1260403	21.05
1991	No Census	No Census	No Census	No Census
2001	75	10069917	2505309	24.88
2011	122	12548926	3414106	27.21

Source: Various Census Reports of India

Fig. 3: Urban Population of J&K



Source: Various Census Reports of India

Historical Development in the urbanization of Jammu city: The development of the Jammu city has occurred in diverse times of history. To have a glimpse at historical development of

urbanization in Jammu city, one has to go through the sequential records of the expansion of the Jammu city that has taken place in different periods of history.

Prior to independence, urbanization progressed at a sluggish pace. The urban landscape transitioned from a medieval aesthetic to a feudal structure, with the seat of governmental authority situated prominently near the palace. The population remained notably low, with only 58,847 individuals recorded in the 1941 census.

After independence in 1947, the partition of India results in large scale migration of population from Pakistan to India and vice versa. This migration of people has been called as one of the greatest movements in history as about 15 million people moved across the border. In 1951, about 4.7 million refugees were entered into India from Pakistan and 2.5 million from Bangladesh. The just residence of these refugees from both the countries was Jammu; which made the city to expand. During the period from 1961-1971, the political disorder and the resultant modifications in the political map of the country have always shaped certain migration in the inflated areas. The Indo Pakistan wars of the 1965 and 1971 further made the people to move from the affected frontiers areas to the inner areas. The period from 1971 to 1991, marked as the period when there was an increase in militancy in the valley of Kashmir that led to the politico-ethnic divide between two main communities residing in the valley. The immediate and foremost outcome of this turmoil was the migration of more than 55 00 families comprised of minority Kashmiri Pandits to Jammu and other parts of the country. The large scale migration during this period was resulted in creating the congestion in urban areas of Jammu and hence it began to grow towards its outer limits. After 1991, there was invigorating urbanization of Jammu city due to population expansion, industrialization, better transport amenities, diversification of conveniences, troubles of the central overcrowded old city, enhancement in facilities and infrastructures, better trade-commerce links, enhanced educational and recreational facilities etc.

The Jammu Municipal Corporation was established in 2003, with its jurisdiction expanded to 112 sq. km through SRO 291 dated 5/9/2003. The original 23 wards of the old city were subdivided into 48, and an additional 23 wards were created, resulting in a total of 71 wards covering an area of 167 sq. km by 2011. This expansion was primarily driven by demographic pressures, marked by a significant influx of migrants from the valley and the rapid expansion of commercial and industrial activities in recent years.

Urbanization and Urban Growth: Status of City Population and Area: The escalation in urban populace can be attributed to the combined factors of natural demographic growth and migration, both of which play crucial roles in the expansion of any city. According to the Census of India 2011 data, a notable influx of people into towns and cities is evident, with nearly one-third of the Indian population now residing in urban areas. Consequently, the process of urbanization and urban development within any city is contingent upon the demographic expansion and subsequent spatial enlargement of the urban landscape. The case of Jammu city adheres to this pattern without deviation.

Jammu city, as a study, is one of the fastest growing city in Jammu and Kashmir and the fastest growing city in Jammu division. Due to its development, the city of Jammu is becoming

the hub for economic and administrative activities which attract the people from small towns, villages and nearby districts to reside and enjoy the facilities available in the Jammu city. So the urbanization and urban growth of Jammu city can be best explained in terms of its population and areal expansion.

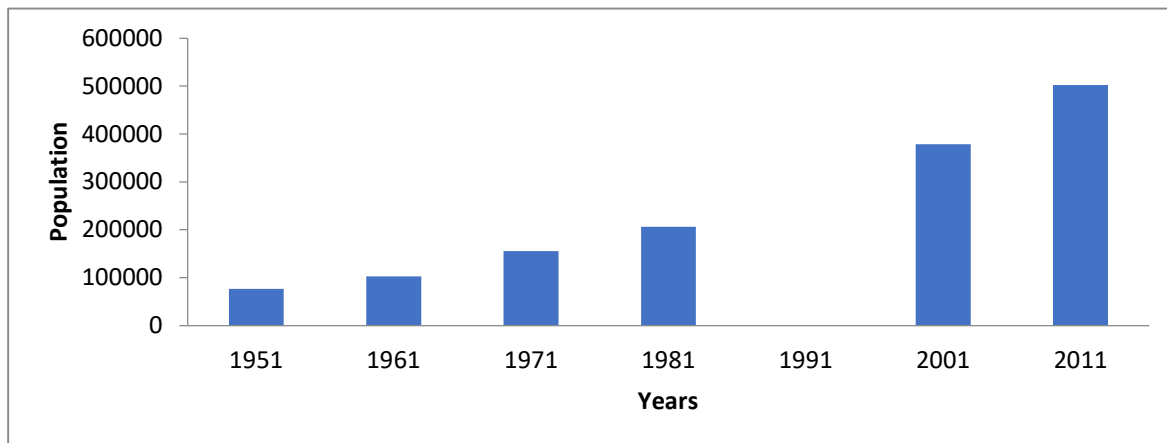
1. Status of City Population: The demographic landscape of Jammu has undergone substantial transformation, transitioning from a modest township to one of India's most rapidly expanding urban centers. Between 1989 and 1994, marked by intense industrialization, urban development, and significant migration, the city experienced a staggering 225.90% population surge, reaching 727,940 residents. Notably, this growth encompasses both permanent residents and transient populations, such as pilgrims and military personnel stationed in the region. The absence of the 1991 census in Jammu and Kashmir underscores the significance of understanding the population dynamics during this period of significant demographic flux. According to the 2001 census, Jammu's population stood at 378,431, escalating further to 502,197 by 2011, signifying a growth rate of 32.70%.

2. Table 3: Year wise Population of Jammu city with absolute variation and decadal Growth rate

Year	Population	Absolute Variation	Decadal Growth Rate
1951	76558	26179	51.96
1961	102738	26180	34.2
1971	155338	52600	51.2
1981	206135	50797	32.7
1991	No census	No census	No census
2001	378431	172296	83.58
2011	502197	123766	32.7

Source: Various Census Reports, Jammu and Kashmir

Fig. 4: Year wise Population of Jammu City



Source: Various Census Reports, Jammu and Kashmir

The above table and figure 1.3 shows that the total population of Jammu city in 1951 was 76558 which had increased to 102738 in 1961 with decadal variation of 34.20%. The year 1971 witnessed mammoth increase in population which reached up to 155338 with decadal variation of 51.20% in comparison to last decade. The population of Jammu city further increased to 206135 in 1981 with decadal variation of 32.70% which was lower than the previous decade. The year 1991 was devoid of any census operation in Jammu and Kashmir State, so its population data was not available. The population of Jammu city has reached to 378431 in 2001 with absolute variation of 172296 which was all time high around 83.58% in all decades. Finally in 2011, the population of Jammu city reached to 502197 with decadal growth rate of 32.70% again showing a decreasing trend in population scenario of the city.

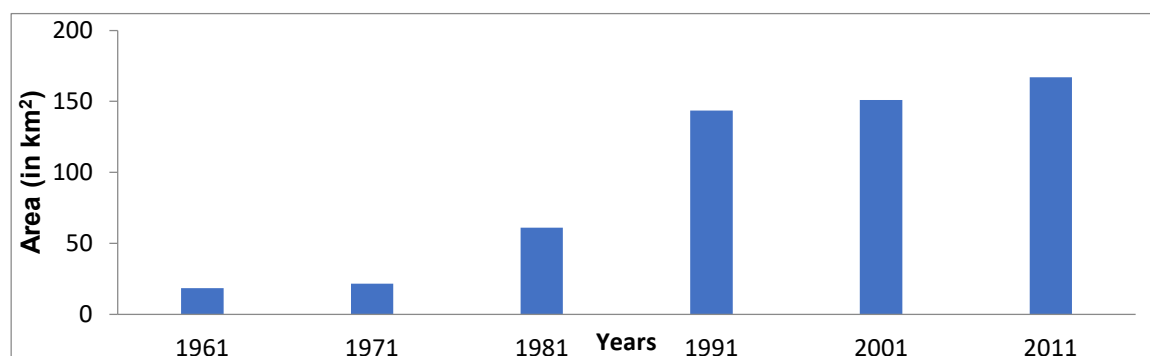
2. Status of City Area: As Jammu is one of the fastest growing cities of India with respect to population and area. There is vast areal expansion of Jammu city. The total area of Jammu city in 1961 was 18.30 Km² which is increased to 21.42 km² in 1971 which further increased to 60.99 km² in 1981. There is a tremendous increase in area in 1991 and it reaches to 143.52 km². But after that there is small increase in area of Jammu city which reaches to 150.99 km² in 2001 and 167 km² in 2011.

Table 4: Total Area of Jammu City 1961- 2011 (Municipal Corporation)

Year	Area(in km ²)
1961	18.30
1971	21.42
1981	60.99
1991	143.52
2001	150.99
2011	167.00

Source: Various Census Reports, Jammu and Kashmir

Fig. 5: Total Area of Jammu City 1961- 2011 (Municipal Corporation)



Source: Various Census Reports, Jammu and Kashmir

Causes for urbanization and urban growth of Jammu city: Jammu city is one the fastest growing cities in Jammu and Kashmir. There is a rapid growth of population in Jammu city in the past few decades which led to urbanization and ultimately its urban growth. There are various causes that are responsible for urbanization and urban growth of Jammu city. These are:

1. Administrative Centre: As Jammu city is one of the important administrative hubs apart from Srinagar city. Therefore, it attracts people from different areas to migrate and settle here to get easy access of the Civil Secretariat which has its seat in Jammu. Jammu city also holds various offices of administration and governance like Directorate offices of many departments which influence people to live in these areas for access governance and social amenities. This increases the urban population of the city and leads to its growth.

2. Employment Opportunities: The ample employment/job opportunities available in the cities attract people towards itself. The city of Jammu also attracts a number of people towards itself as it provides a lot of employment opportunities. Hence majority of people frequently migrate into urban centre of Jammu to get an access for the well paying job in the different developmental sectors like education health, transport, sports, business etc.

3. Industrialization: Jammu is becoming an emerging centre of industrialization. The industrial centres at Gangyal, Digayana and Birpur attracts a number of labour, entrepreneurs, managers, clerks, engineers etc. to come and get a chance to work in modern sectors according to their capabilities.

4. Commercialization: Commerce and trade plays a vital role in urbanization. As industrialization plays a key role in the growth of urban areas on the other hand commerce and trade have a intense influence in the growth of cities. Commercialization and trade centre offer better commercial opportunities and returns as compared to rural areas. The commercial activities in the Jammu city attract more and more people as traders and workers thereby contributing to the growth of the city. As an important commercial centre in the Jammu division, Jammu city provides the consumers a better chance to get variety of things at cheaper rates due to competition. On the other hands the businessman and traders get a easy market for their products as a number of consumers visit these markets. The commercial centres in Jammu like Raghunath Bazar, Gandhi Nagar, Prade, etc attracts the consumers from different parts for shopping.

5. Social Benefits and Services: Numerous social advantages are attributed to urban living. These encompass enhancements in living standards, sanitation, housing, recreational facilities, and particularly, social interactions. The city of Jammu gives all these social services and their benefits which attract a number of people to migrate and reside here. The Jammu Municipal Cooperation and Jammu Development Authority worked very hard to make sure that the people will get these facilities and benefits easily.

6. Education Facilities: The city of Jammu is a nucleus of various education facilities. A number of excellent schools and colleges attract a number of students to come here. Apart from this a number of good coaching institutes in Jammu city also attracts the students to migrate here and get the benefit of this facility.

7. Healthcare Facilities: Jammu city is the focus point for the best health facilities in Jammu and Kashmir. One of the first Medical colleges i.e. Government Medical College at Bakshi Nagar in the Jammu Division give best health facilities to the people. Apart from this Super Speciality hospital and other private hospitals like ASCOMS also attract people to have an access for the good health facilities. This attracts the people to come and reside in Jammu city which ultimately led to increase in its population and growth.

8. Migration: The primary catalyst for the urbanization and growth of Jammu city is the substantial migration of individuals, predominantly from the Kashmir valley during the political upheaval in the 1990s. Furthermore, individuals from proximate towns, villages, and other districts also relocate to Jammu city to avail themselves of the facilities offered therein, thereby fostering urban development.

9. Tension in the Border Areas: The Jammu division shares border with Pakistan and lies close to the international border. We know that we don't have good relations with our neighbour Pakistan and from time to time there has been tension in the border areas which force the people to move to the Jammu city. The people from Akhnoor, Rajouri, Poonch, etc. migrate to Jammu to lead a peaceful life and also to get the access of modern facilities.

10. Tourism: The city of Jammu is called the 'City of Temples'. Many tourists came here every year for pilgrimage. Tourism is also called as an industry as it involves many sectors like transport, hotel, business etc. The Shrine of Mata Viashno Devi attracts lakhs of pilgrims to pay their devotion. This directly affects the economy of Jammu city. A large number of people across Jammu division migrate to Jammu city to get the economic benefits from this tourism. The people migrates to Jammu city get easy economic benefits and employment opportunities and ultimately increases the city population and led to its growth.

So, the above mentioned causes in one or the other way are responsible for the urbanization and urban growth of Jammu city. All these causes attract the people from different areas to Jammu city and reside there.

Conclusion: Urbanization is a worldwide phenomenon where Jammu city is one of the fastest-growing cities in Jammu and Kashmir. Jammu City has been experiencing unprecedented urbanization in terms of both population growth and spatial expansion over the past few decades. The city manifests a discernible trend of augmentation in both population and geographical extent. Specifically, the population of Jammu City escalated from 76,558 in 1951 to 502,197 in 2011. The area also increased from 18.30 Km² in 1961 to 167 km² in 2011. This was due to the rapid increase in industrialization and urbanization in Jammu city. The mass migration from the valley during the 1990's due to political turmoil also adds to the population of Jammu city.

References:

- Census. (2001). Census of India. New Delhi: Government of India.
 Census. (2011). Census of India. New Delhi: Government of India.
 Fox, S., & Goodfellow, T. (2016). *Cities and development* 2nd edition. London: Routledge.

- JDA. (2022). Jammu Development Authority. Government of Jammu & Kashmir.
- Kumari, K. (2013). *Eastern Uttar Pradesh: A study in Urban Geography*. New Delhi: Ayushman Public Publication.
- Mandal, R.B. (2000). *Urban Geography*. New Delhi: Concept Publishing Company New Delhi.
- Manhas, V.S. and Jasrotia, R. (2013). *Systematic Geography of Jammu and Kashmir*. New Delhi: Commonwealth Publishers Pvt. Limited.
- Manzoor. A.W., & Ishtiaq A. M. (2018). Progression of Urbanization In Jammu and Kashmir- India, An Inter District Analysis. *International Journal of Scientific Research and Reviews*, 7(4). 2647-2659.
- Municipal Corporation of Jammu, (2011): *Master Plan of Jammu City*. Government of Jammu & Kashmir.
- Thompson, W.S. (1935). *Urbanization Encyclopaedia of Social Science*. *Macmilan*, 25: Page, 189.